

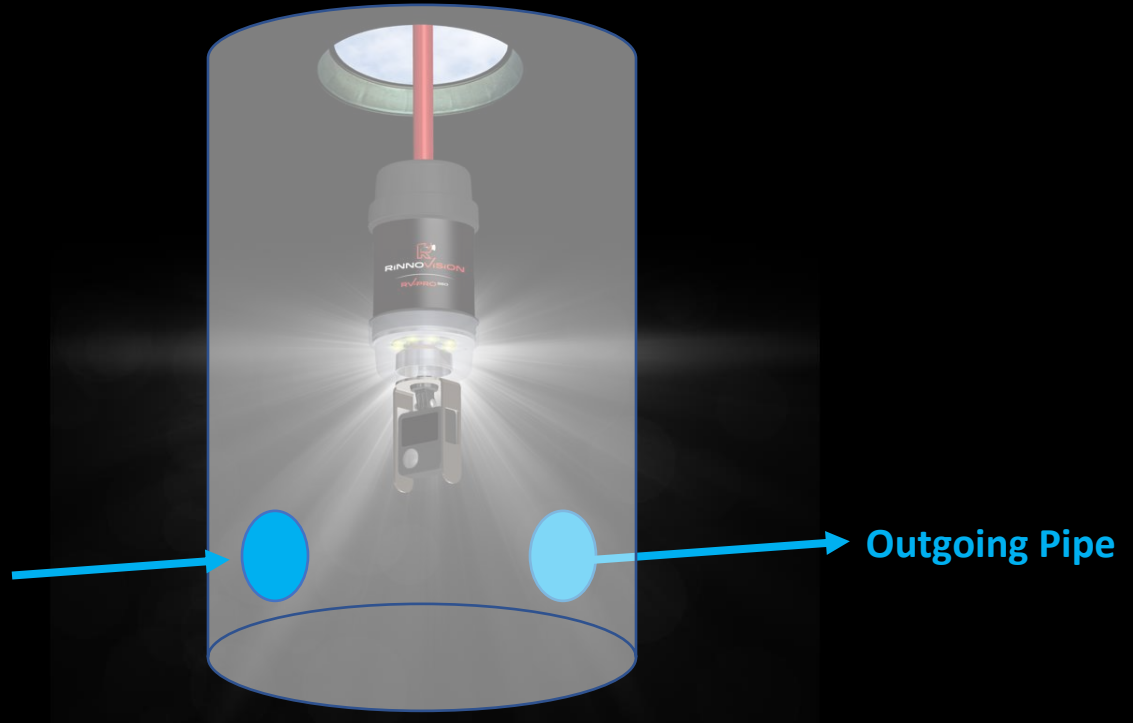


RV-Pro 360 | **How to Use**

Version 6

Initial Setup

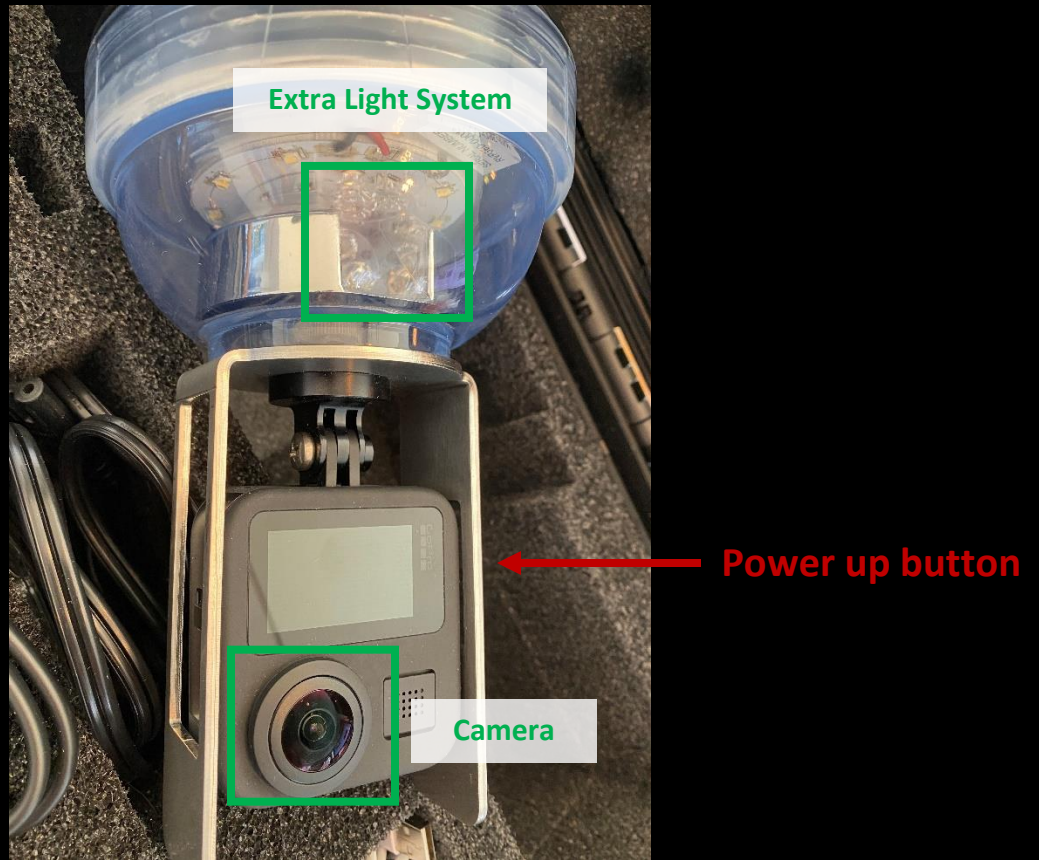
After checking and securing the job site for safety, open the manhole cover and note the outgoing pipe direction. The outgoing pipe should ideally be aligned with the 6 o'clock reference position of the RV-Pro 360.



GoPro Power Up

Power up the GoPro by pressing the square button on its side. This is usually a good time to screw the RV-Pro 360 on the push rod if it wasn't done already.

Note that the extra light system of the RV-Pro 360 should ideally be aligned with the front or back GoPro camera lenses in order to get an optimal view of the side pipes.



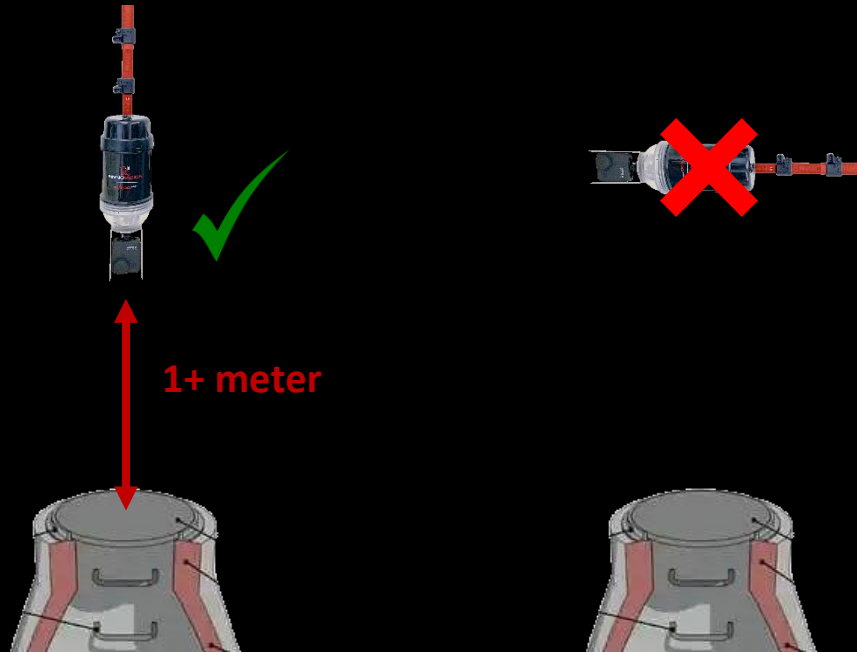
Once the GoPro is powered up you might need to switch it in **360° video** mode by pressing the small camera icon which will change it to a globe icon.



Manhole Inspection

Prior to entering the manhole:

1. Position the RV-Pro 360 so that its axis is parallel to the manhole AND hold it at least 1 meter above the manhole rim.



2. Without moving the RV-Pro 360, turn on the RV-Pro 360 light by pressing the large silver button on the top of the RV-Pro 360.
3. Without moving the RV-Pro 360, start the video by pressing the "O" button on the bottom of the GoPro.



Once the video has been started:

1. Place the GoPro facing the 12:00 (opposing the outgoing pipe) position and begin lowering it into the manhole by extending each section of the push rod, taking care to center it as much as possible in the manhole.
2. Lower the RV-Pro 360 to the bottom of the manhole at a maximum speed of 9 meters per minute.
3. **(only if using the RV-Pro 360 with the extendable pole)** Once the GoPro is at the height of the side pipes at the bottom of the manhole (camera height can be identified by the stronger light spot on the manhole wall), rotate it by 360° to have the extra light spot going down each side pipe.
4. **(only if using the RV-Pro 360 with the extendable pole)** Position the RV-Pro 360 about ¼ turn (90°) from the alignment it was positioned in on the way down.
5. Raise the RV-Pro 360 up at a maximum speed of 9 meters per minute.
6. When it returns to the start position above the manhole, stop recording by pressing the GoPro “ O ” button and turn off the light.

View the Video

On the RV-Pro 360 Tablet

Here is how to view the RV-Pro 360 videos on the tablet, note however that it is best to view them on a computer to get the optimal 4k video quality:

1. Open the **GoPro Quik** app on your tablet.
2. Connect it to the GoPro by clicking on the camera icon in the upper-right corner.
3. Select *View Media*.
4. Select the video that was just taken.

On your Computer

The GoPro camera on the RV-Pro 360 produces .360 video files which can be played in the GoPro player but it is strongly recommended to converted them to .MP4 files so that they can be played in VLC Media Player or the compatible NASSCO software of your choice.



GoPro Player

DOWNLOAD

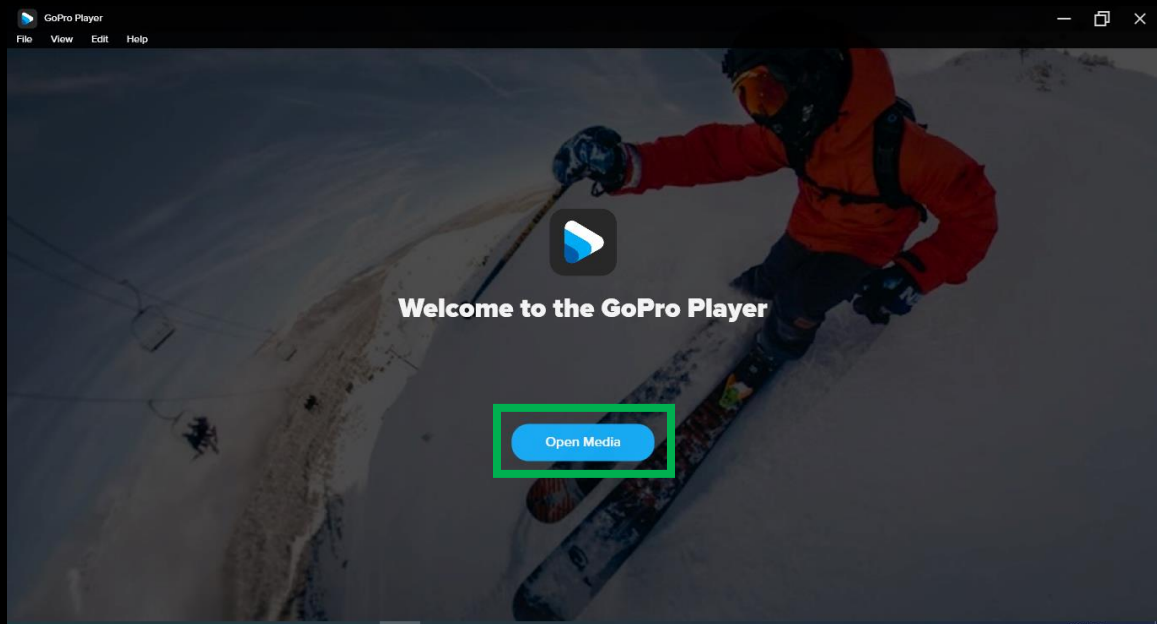


VLC Media Player

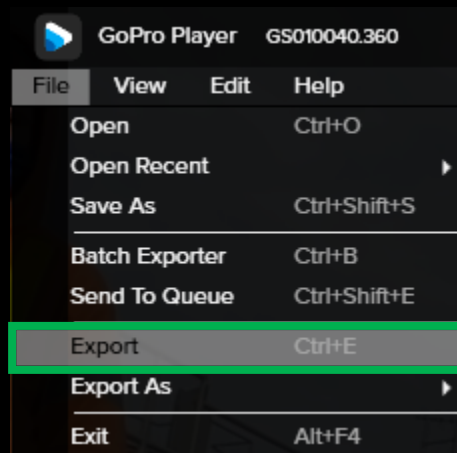
DOWNLOAD

In order to do so, follow these steps:

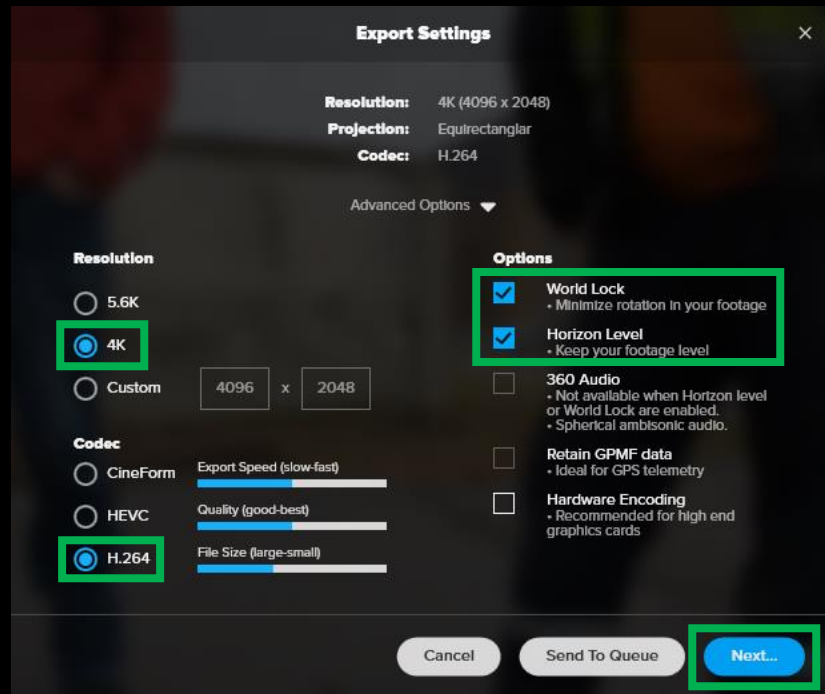
1. Connect the GoPro to your computer with the USB cable and download the .360 video(s) to your computer.
2. Disconnect the GoPro from your computer.
3. Open the GoPro Player app and click on *Open Media* to load the video.



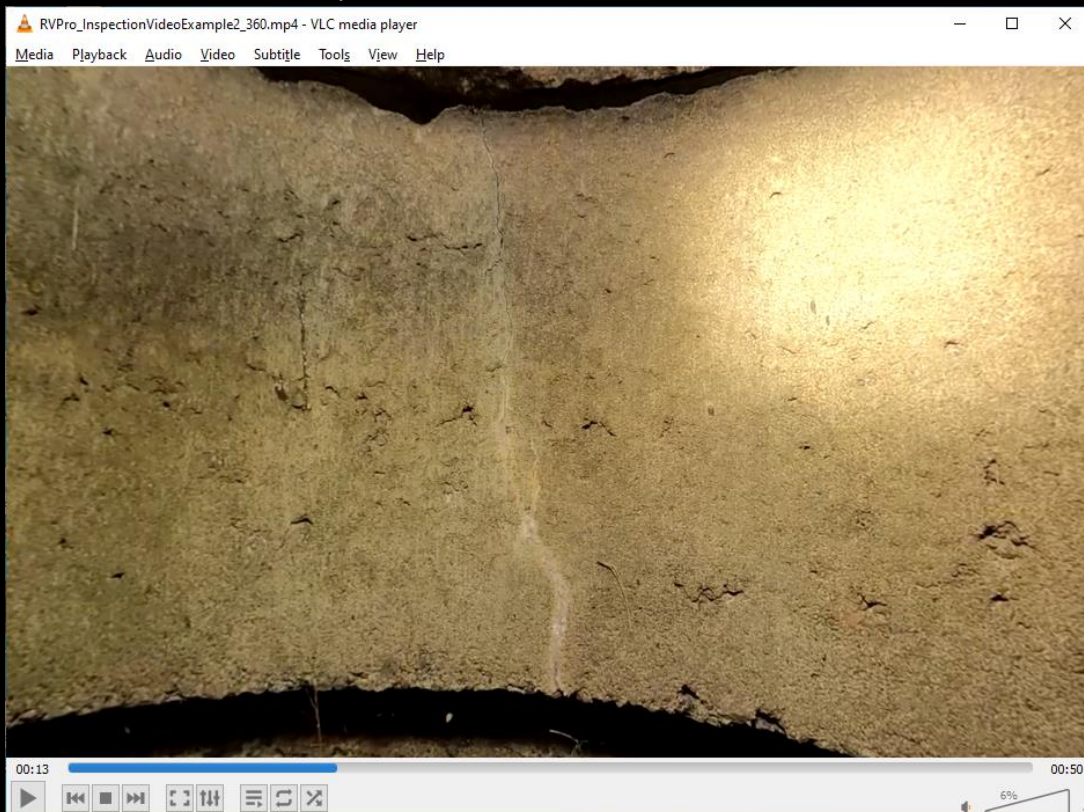
4. Select **FILE > EXPORT**.



5. Select the following parameters and click on the *Next* button.

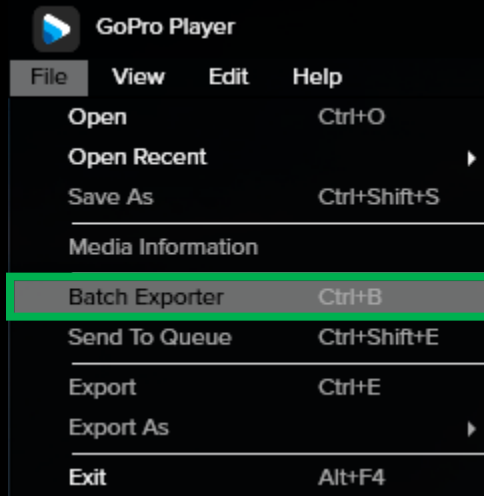


6. The .MP4 video generated can then be played in VLC Media Player or the compatible NASSCO MACP-certified software of your choice.



Two last things to note:

- If you need to make multiple conversions you can use the **Batch Exporter** feature to speed up the conversion process



- Make sure that your computer has the following minimum specifications so that the conversion process doesn't take more than one minute per minute of video.
 - Quad-core processor (1.8 GHz min per core)
 - 16 GB RAM
 - 4 GB video memory
 - 64-bit OS

Thank you for using our products and don't hesitate to reach out to us if you have any questions or comments.



Félix Baillargeon-Ladouceur | **General Manager**

418-561-0436

f.ladouceur@rinnovision.com